

# PUBLIC NOTICE

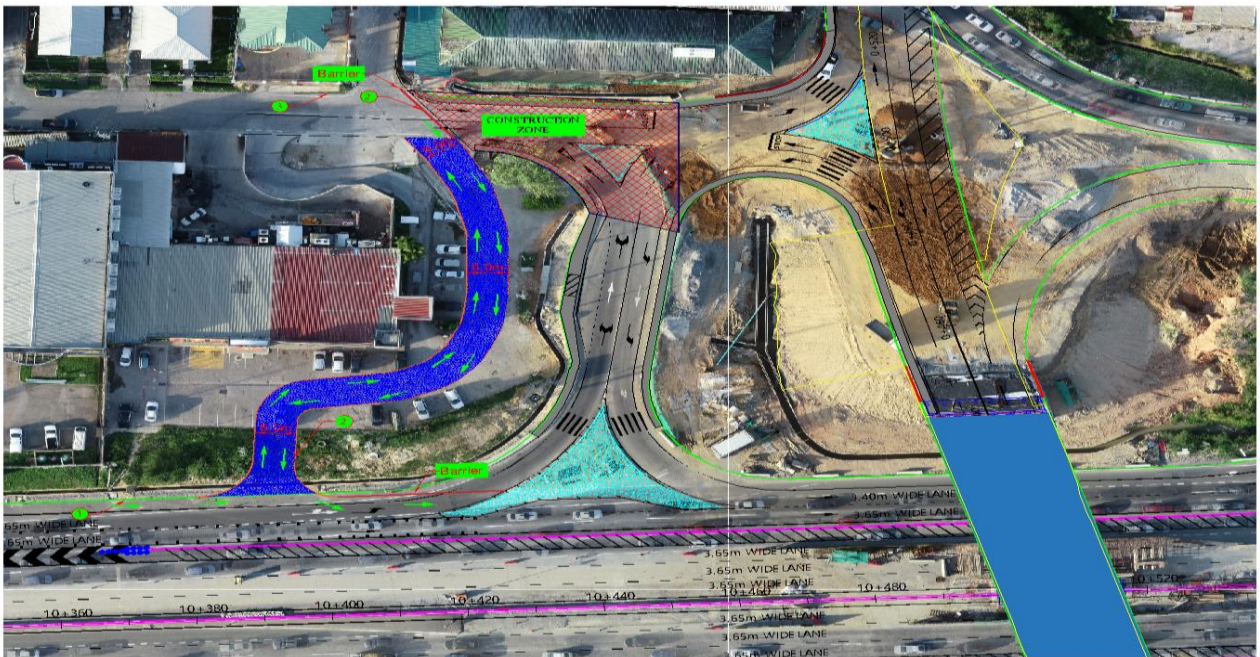
## CUREPE INTERCHANGE PROJECT

### Change in Traffic Flow along the Churchill Roosevelt Highway – Access to Valsayn Branch Road and KFC

The National Infrastructure Development Company Limited (NIDCO) in partnership with the Ministry of Works and Transport (MOWT) wishes to advise the general public (motorists/residents/pedestrians) that there will be a change in traffic flow for members of the general public who wish to access the **Valsayn Branch Road** and **KFC**. This diversion will be in effect from **Monday 09<sup>th</sup> December, 2019 to Saturday 14<sup>th</sup> December, 2019** to facilitate paving works along Valsayn Branch Road.

#### Alternative Route:

Motorists are kindly asked to utilize the temporary detour (*see map below for ease of reference*) as an alternative access to Valsayn Branch Road and KFC.



CONSTRUCTION PLAN SCHEMATIC

#### Motorists are also advised to:

- Proceed with caution.
- Observe all directional signage and barriers provided on the approaches to the intersection.
- Comply with instructions issued by the police officers/traffic wardens to facilitate a safe and orderly flow of traffic.

All precautions are being taken by NIDCO, MOWT and its Contractors to ensure proper Health, Safety and Environmental Standards are maintained.

We thank you for your continued cooperation and regret any inconvenience caused.

For further information please contact:

**The Corporate Communications Department**

**National Infrastructure Development Company Limited - NIDCO**

**The Atrium | Don Miguel Road Extension, San Juan | Phone: 638-8236 | Email: [communications@nidco.co.tt](mailto:communications@nidco.co.tt)**