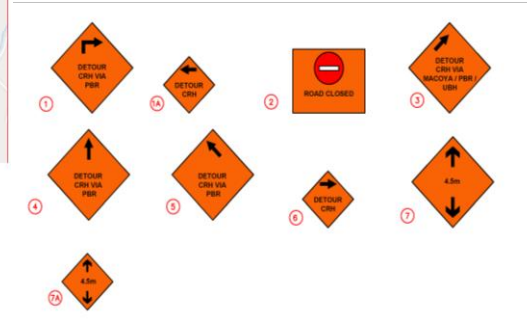
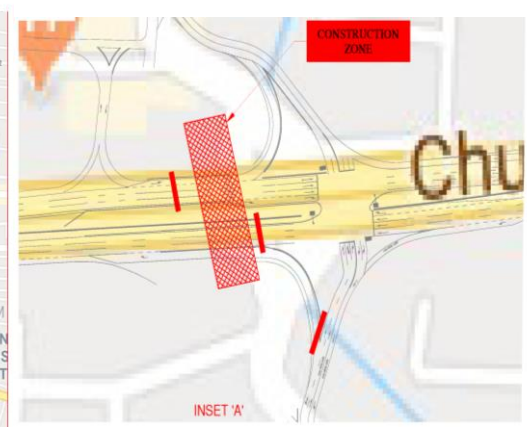
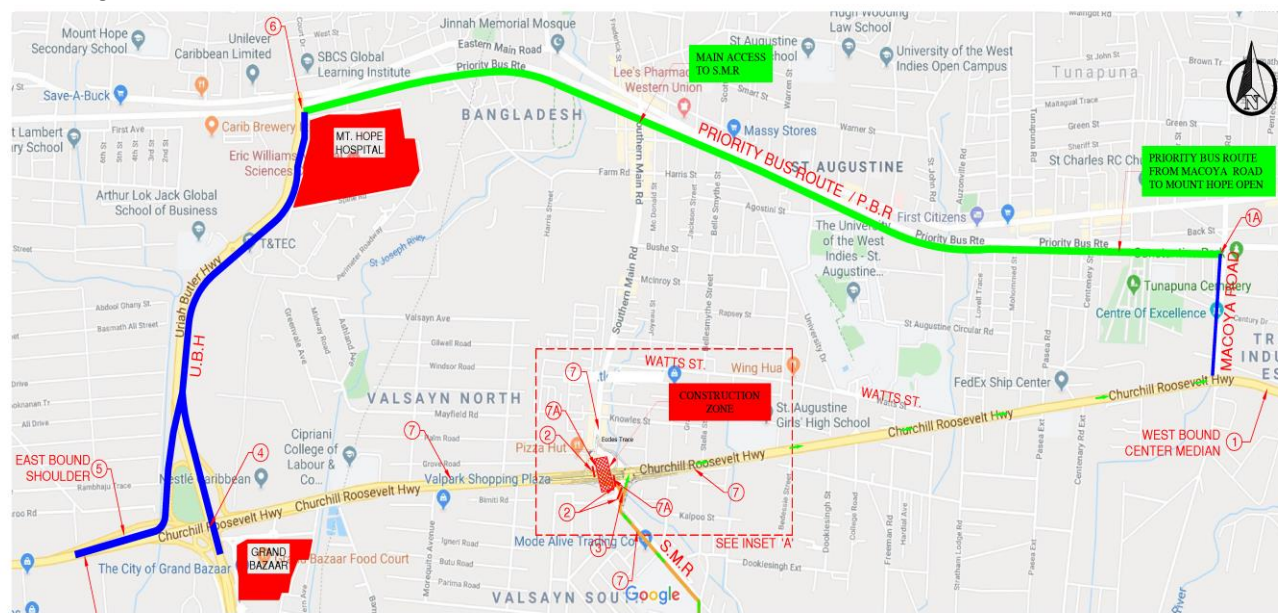


PUBLIC NOTICE

The National Infrastructure Development Company Limited (NIDCO) in partnership with the Ministry of Works and Transport (MOWT) wishes to advise the general public (motorists/residents/pedestrians) of a **temporary closure of the Churchill Roosevelt Highway in the vicinity of the Curepe Interchange from Sunday 5th January, 2020 at 6:00 AM to Monday 6th January, 2020 at 3:00 AM**. The details are as follows:

- A temporary closure of a section of the Churchill Roosevelt Highway (CRH) in the vicinity of the Curepe Interchange commencing on Sunday 5th January, 2020 at 6:00 AM and ending on Monday 6th January, 2020 at 3:00 AM; and
- A height restriction of 4.5m in place at the construction zone from Sunday 5th January, 2020 continuing to 29th February, 2020.

This temporary closure is necessary to facilitate construction works associated with the Installation of the Steel Girders for the Curepe Interchange. Commuters are advised that the following **detours** will be in effect:



ALTERNATIVE ROUTES

During this period **ONLY** the Priority Bus Route will be open from its intersections with the Uriah Butler Highway (Mt. Hope Intersection) to the Macoya Road Intersection.

ACCESS TO AREAS EAST OF THE CLOSED SECTION OF THE CRH

FROM UBH NORTHBOUND

Motorists travelling north along the Uriah Butler Highway (UBH) from San Fernando, Chaguanas and environs who wish to proceed East beyond the closed section of the CRH are advised to continue along northbound section of the UBH and should turn right onto the Priority Bus Route (PBR) at the Mt. Hope Intersection. Motorists should then proceed along the authorized section of the PBR and turn right at its intersection with Macoya Road to access the CRH.

FROM CRH EASTBOUND

Motorists travelling east along the Churchill Roosevelt Highway (CRH) from Port of Spain, El Socorro and environs who wish to proceed East beyond the closed section of the CRH will be diverted to the northbound section of the Uriah Butler Highway and should turn right onto the Priority Bus Route (PBR) at the Mt. Hope Intersection. Motorists should then proceed along the authorized section of the PBR and turn right at its intersection with Macoya Road to access the CRH.

FROM SOUTHERN MAIN ROAD (SMR) NORTH AND SOUTH

Motorists and residents on Southern Main Road (SMR) in the vicinity of Curepe, Caroni and environs who wish to proceed East along the Churchill Roosevelt Highway or continue along SMR through the Curepe Intersection may proceed in their usual direction to access their final destination.

ACCESS TO AREAS WEST OF THE CLOSED SECTION OF THE CRH

FROM CRH WESTBOUND

Motorists travelling west along the Churchill Roosevelt Highway (CRH) from Arima, Piarcó, Trinity and environs who wish to proceed West beyond the closed section of the CRH will be diverted to Macoya Road (North) and should then turn left onto the Priority Bus Route (PBR). Motorists should then proceed along the authorized section of the PBR, turn left at the Mt. Hope Intersection to access the UBH Southbound and follow the directional signs to access the CRH.

FROM SMR NORTH AND SOUTH

Motorists and residents on Southern Main Road (SMR) in the vicinity of Curepe, Caroni and environs who wish to proceed West along the Churchill Roosevelt Highway beyond the closed section should proceed north along the SMR and turn left onto the Priority Bus Route (PBR). Motorists should then proceed along the authorized section of the PBR, turn left at the Mt. Hope Intersection to access the UBH Southbound and follow the directional signs to access the CRH.

LOCAL TRAFFIC

Motorists and residents whose final destination lies within the temporarily closed section of the Churchill Roosevelt Highway will be diverted accordingly or allowed to proceed to access their final destination.

Motorists are also advised to comply with following:

- Proceed with caution and drive at a reduced speed on approaching the work zone.
- Observe all temporary directional signage provided on the approaches to the site.
- Instructions issued by police officers on site to facilitate a safe and orderly flow of traffic.
- Be aware of heavy equipment entering and exiting the site.

NIDCO apologises for any inconvenience and looks forward to your kind co-operation as development works are necessary to upgrade the present infrastructure.

We appreciate your cooperation and understanding. For further information please contact:

THE CORPORATE COMMUNICATIONS DEPARTMENT
National Infrastructure Development Company Limited
The Atrium - Don Miguel Road Extension, San Juan
PHONE: 638-8236 | MAIL: communications@nidco.co.tt