



National Infrastructure Development Company Limited

# PUBLIC NOTICE

## TEMPORARY TRAFFIC DIVERSION (St Mary's Junction /Otaheite)

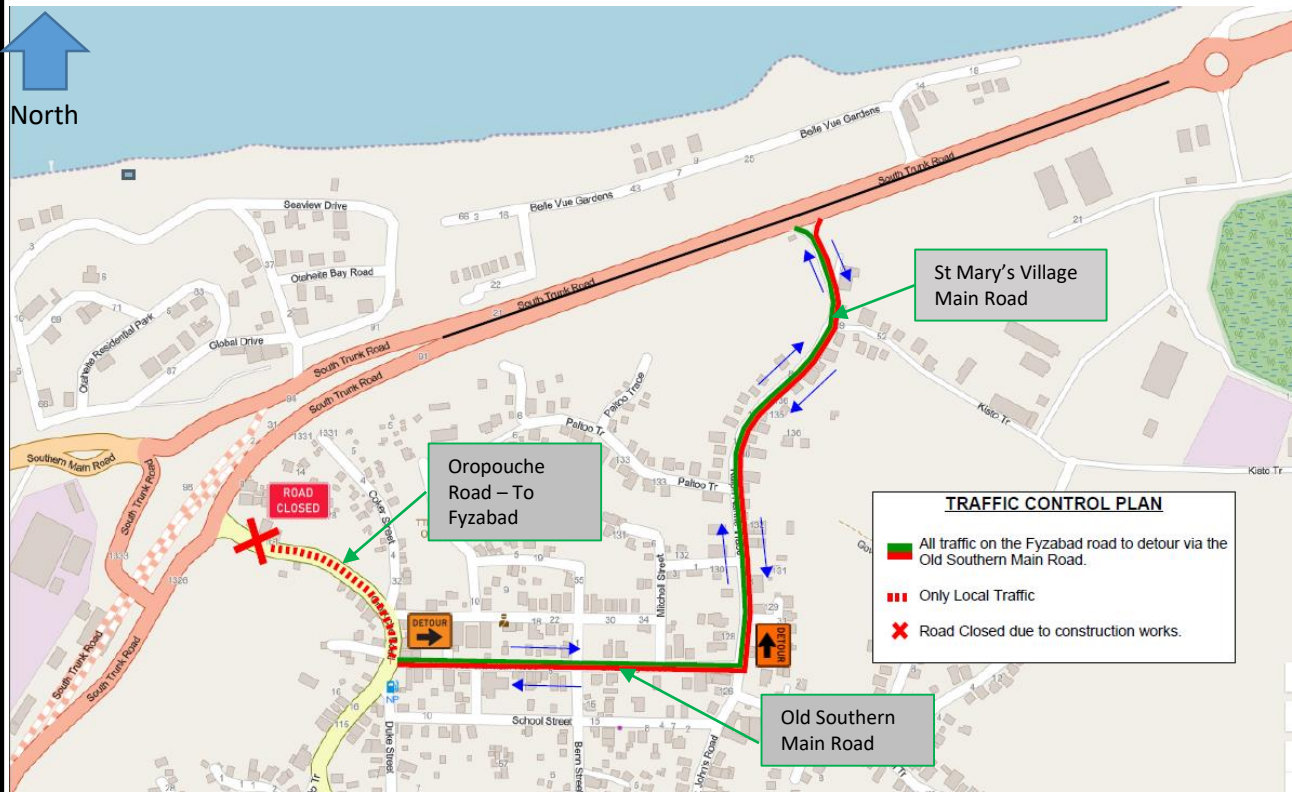
The National Infrastructure Development Company Limited (NIDCO) and the Ministry of Works and Transport (MOWT) together with its agent Junior Sammy Construction Limited (JSCL) wishes to advise the travelling public of a proposed temporary traffic diversion at St Mary's Junction, Otaheite, on **Friday 17<sup>th</sup> September 2021 from 9:00 p.m to Sunday 19<sup>th</sup> September 2021 at 12:00 midnight**. This proposed diversion is necessary to facilitate the construction of the St Mary's Interchange as part of the on-going completion of the **Solomon Hochoy Highway Extension to Point Fortin Project (SHHEPF)**.

### Motorists are advised as follows :

- The intersection of Oropouche Road and South Trunk Road at St Mary's Junction will be closed to vehicular Traffic to facilitate construction works.
- All vehicular traffic wishing to access/egress Oropouche Road in the vicinity of St Mary's Junction must utilise the old Southern Main Road and the St Mary's Village Main Road as per the map below.
- There will be ongoing works on the intersection of Oropouche Road and South Trunk Road in order to complete the construction of the St Mary's Interchange.

### Motorists are also advised to:

- Proceed with caution and observe all directional signs.
- Be aware of on-going construction works and heavy equipment operating at the intersection.
- Comply with any instructions from Police Officers on site to facilitate the flow of traffic in an orderly manner.



All precautions are being taken by NIDCO, MOWT and its contractors to ensure proper Health, Safety and Environmental Standards are maintained.

For further information please contact:

**NIDCO OUTREACH DEPARTMENT**

**National Infrastructure Development Company Limited**

**Golconda Connector Road, Golconda**

**PHONE(S): 638-8236 / 298-5540 | Email: [CommunityOutreach@nidco.co.tt](mailto:CommunityOutreach@nidco.co.tt)**