

# PUBLIC NOTICE

## TEMPORARY TRAFFIC DISRUPTION

### CONSTRUCTION OF A VEHICULAR OVERPASS IN THE VICINITY OF POWDER MAGAZINE (AND RELATED ROAD IMPROVEMENTS) PROJECT

The National Infrastructure Development Company Limited (NIDCO) and the Ministry of Works and Transport (MOWT) wish to remind the general public of temporary adjustments to the traffic arrangement at the Intersection of Columbus Boulevard and Western Main Road (WMR), Eastbound and Westbound lanes, during the period:

Thursday, 27<sup>th</sup> April 2023 to Wednesday, 31<sup>st</sup> May 2023

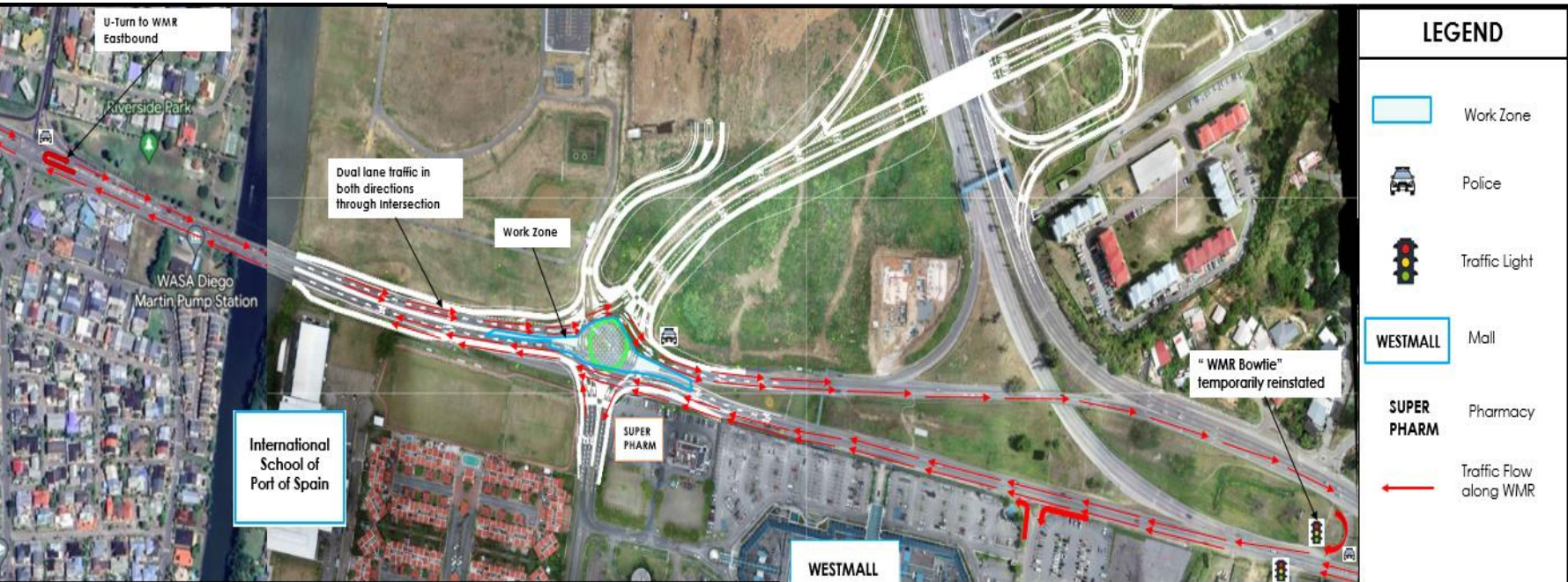
This temporary traffic arrangement is necessary to facilitate the construction of a roundabout and drainage system at the Intersection of Columbus Boulevard and WMR as part of the ongoing Diego Martin overpass project.

Motorists are advised that **Phase 3** of the temporary traffic arrangements will be implemented from **7am Monday, 15<sup>th</sup> May 2023 to 7pm Thursday, 18<sup>th</sup> May 2023**. During this period, motorists are advised that the following will be in effect:

- **EASTBOUND WMR** - Motorists travelling east along WMR in the vicinity of Columbus Boulevard must utilize the newly constructed section of the roundabout. Those wishing to access Westmall and environs should proceed further east to the "WMR bowtie" and access these areas via the westbound carriageway of the WMR.
- **ENTERING DIEGO MARTIN & ENVIRONS** - Motorists travelling east along WMR and wishing to access Diego Martin are encouraged to use Westland Avenue/Morne Coco Rd and proceed to their final destination. Motorists travelling west along WMR and wishing to access Diego Martin can continue to access the Diego Martin Highway from the WMR.
- **EXITING COLUMBUS BOULEVARD** – Motorists leaving Columbus Boulevard who wish to access WMR eastbound must do so via the Intersection of Westland Avenue and WMR. U-turn will be allowed at this Intersection.
- **WESTBOUND WMR** – Two (2) lanes of traffic will remain open on the WMR eastbound and westbound carriageway.

The use of the "WMR bowtie" will remain in effect for the duration of construction and will be signaled to safely control traffic in this area.

Police will be stationed at the work zone and other key intersections to assist with traffic control during the period of construction.



Motorists are also advised to:

- Proceed with caution and drive at a reduced speed on approaching the work zone.
- Observe all temporary directional signage provided on the approaches and through the work zone.
- Comply with instructions issued by police officers and traffic wardens onsite to facilitate a safe and orderly flow of traffic.
- Be aware of heavy equipment entering and exiting the work zone.

All precautions are being taken by the MOWT, NIDCO and its Contractor to guarantee that proper Health, Safety and Environmental Standards are maintained.

We thank you for your continued cooperation and regret any inconvenience caused.

**THE CORPORATE COMMUNICATIONS DEPARTMENT**  
**National Infrastructure Development Company Limited - NIDCO**  
**The Atrium – 6B Don Miguel Road Extension, El Socorro Extension,**  
**EL SOCORRO 280603, Trinidad and Tobago.**  
**PHONE: 226-7900 | E-MAIL: communications@nidco.co.tt**